

Drawing



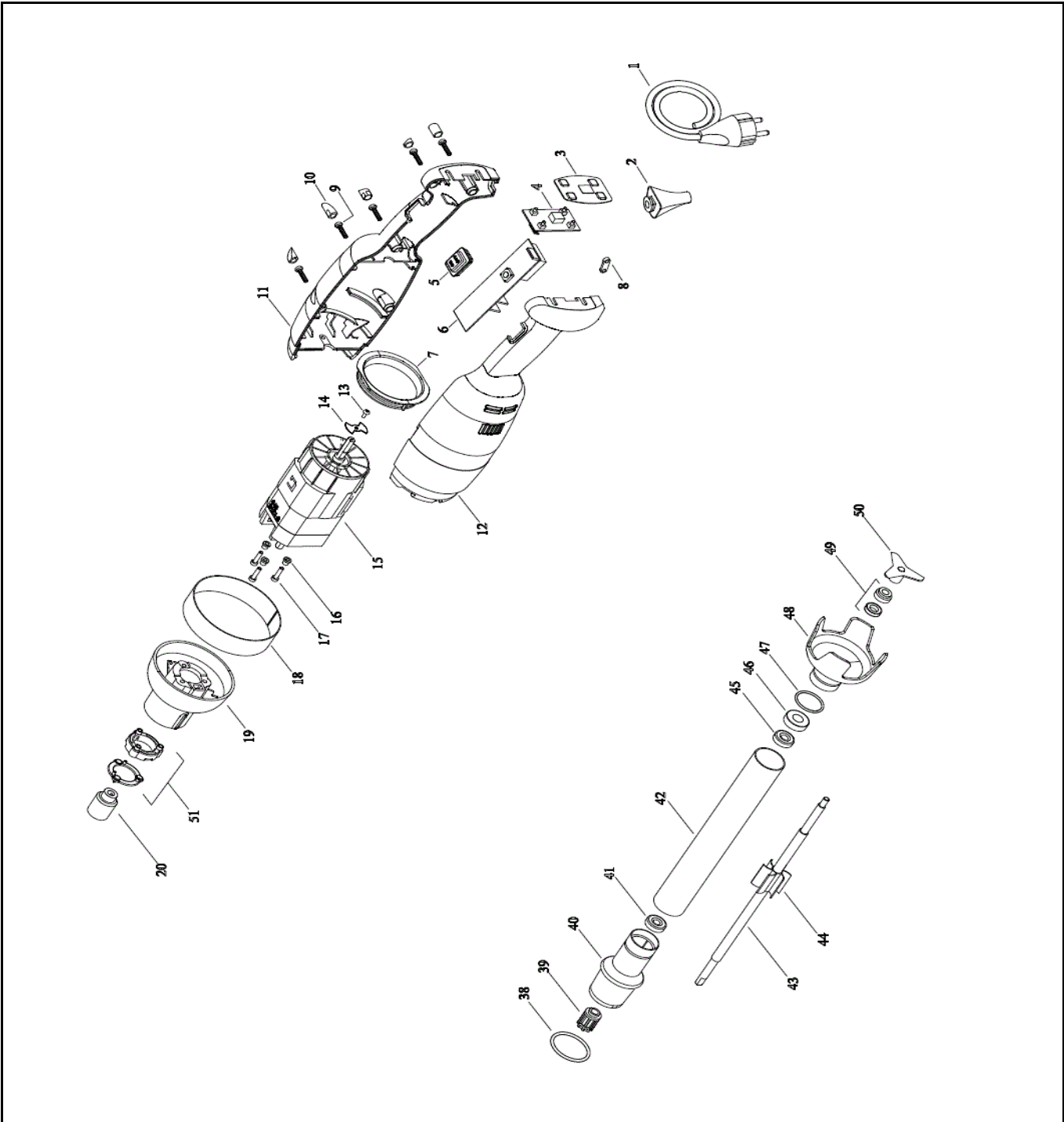
Hendi B.V.
 Steenoven 21
 3911 TX Rhenen
 The Netherlands

Batch #
 0000000


Appliance part#
 224335

Description
 Stick Blender Hendi 300

Date	15-10-2012	Revision #	Revision version
Revision	First bill of materials (BOM)		



Bill of materials (BOM)

 Hendi B.V. Steenoven 21 3911 TX Rhenen The Netherlands	Batch #	Appliance part#
	0000000	224335
	Description	
Stick Blender Hendi 300		


Date	15-10-2012	Revision #	Revision version
Revision	First bill of materials (BOM)		

Item	Description	Part#	Quantity	Remark	Picture
1	Powercord	929445	1		
2	Grommet	929452	1		
3	Display sticker	929469	1		
4	Display pcb	929476	1		
5	Cover switch	929483	1		
6	Main pcb	929490	1		
7	Bracket	n/a	1		
8	Powercord retention	n/a	1		
9	Screw	n/a	5		
10	Plug housing	929506	5	(set of 4 pcs)	
11	Housing righthside	n/a	1		
12	Housing leftside	n/a	1		
13	Screw M3x8	n/a	1		
14	Propeller	n/a	1		
15	Motor 300W	929513	1		
16	Damping rubber	n/a	3		
17	Screw M4x16	n/a	3		
18	Sticker	929520	1		
19	Cap	n/a	1		
20	Coupler (female)	929537	1		
38	O-Ring	929544	1		
39	Coupler (male)	929551	1		
40	Conical plug	n/a	1		
41	Bearing (608)	n/a	1		
42	Tube 35x1,5 L=300mm	n/a	1		
43	Drive axle 10mm L=300mm	n/a	1		
44	Damping rubber	n/a	1		
45	Bearing	n/a	1		
46	Grommet	n/a	1		
47	Ring	n/a	1		
48	Cap stick	n/a	1		
49	Oil seal	929568	1		
50	Knive	929575	1		
51	Ring insulator	n/a	1		

n/a -> not available

nss -> not sold separately

Circuit diagram

 Hendi B.V. Steenoven 21 3911 TX Rhenen The Netherlands	Batch #	Appliance part#
	0000000	224335
	Description	
	Stick Blender Hendi 300	

Date	15-10-2012	Revision #	Revision version
Revision	First bill of materials (BOM)		

Not Available.